

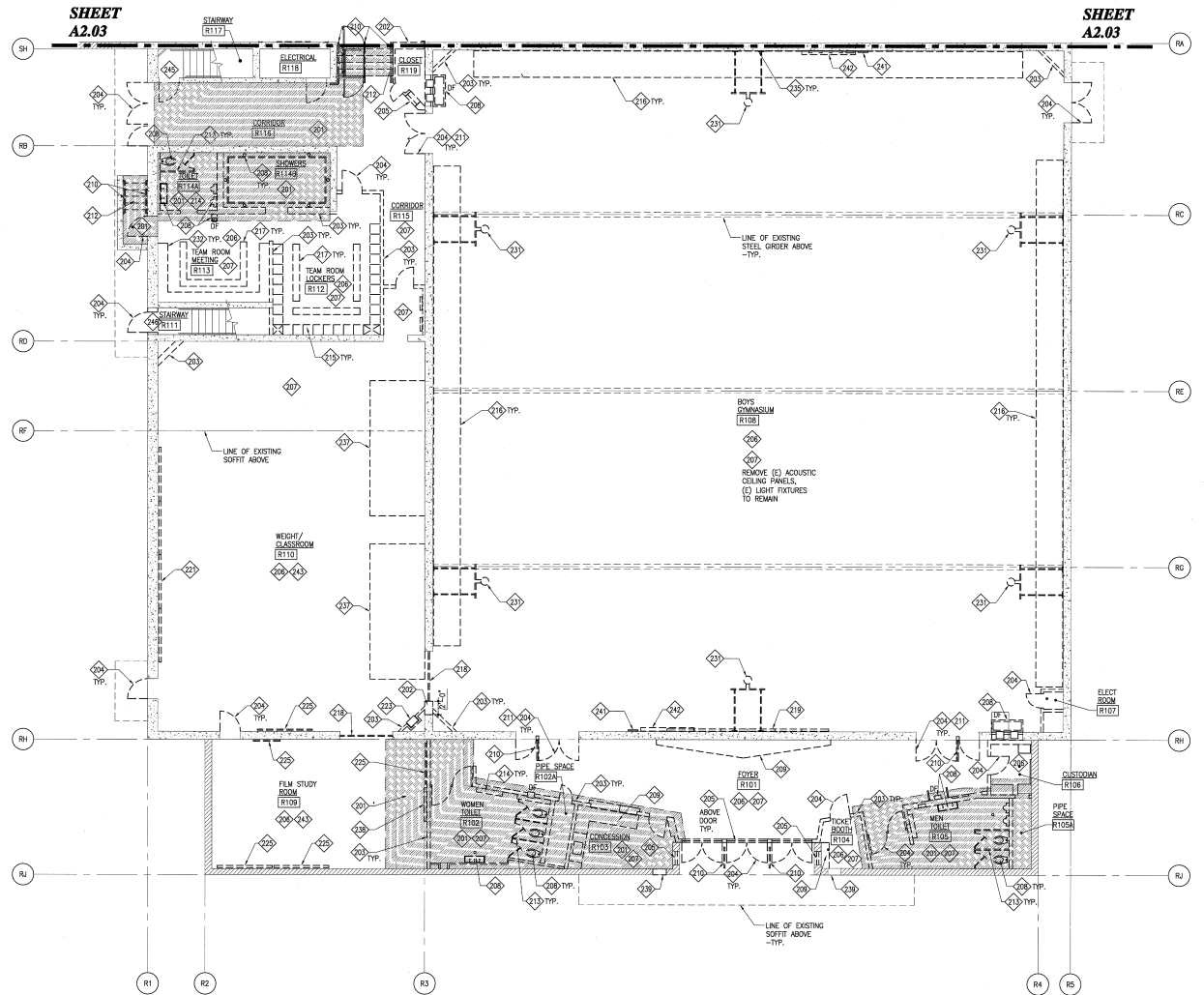
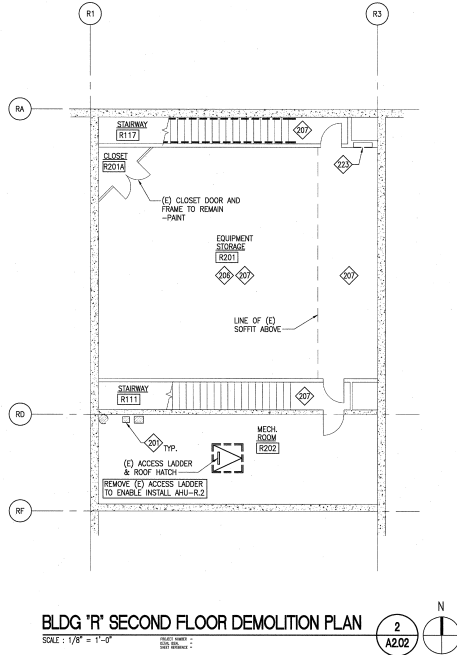
# Pasadena High School - Future Work



Presented By: Flewelling & Moody, Sam Sahand  
Date: February 9, 2016

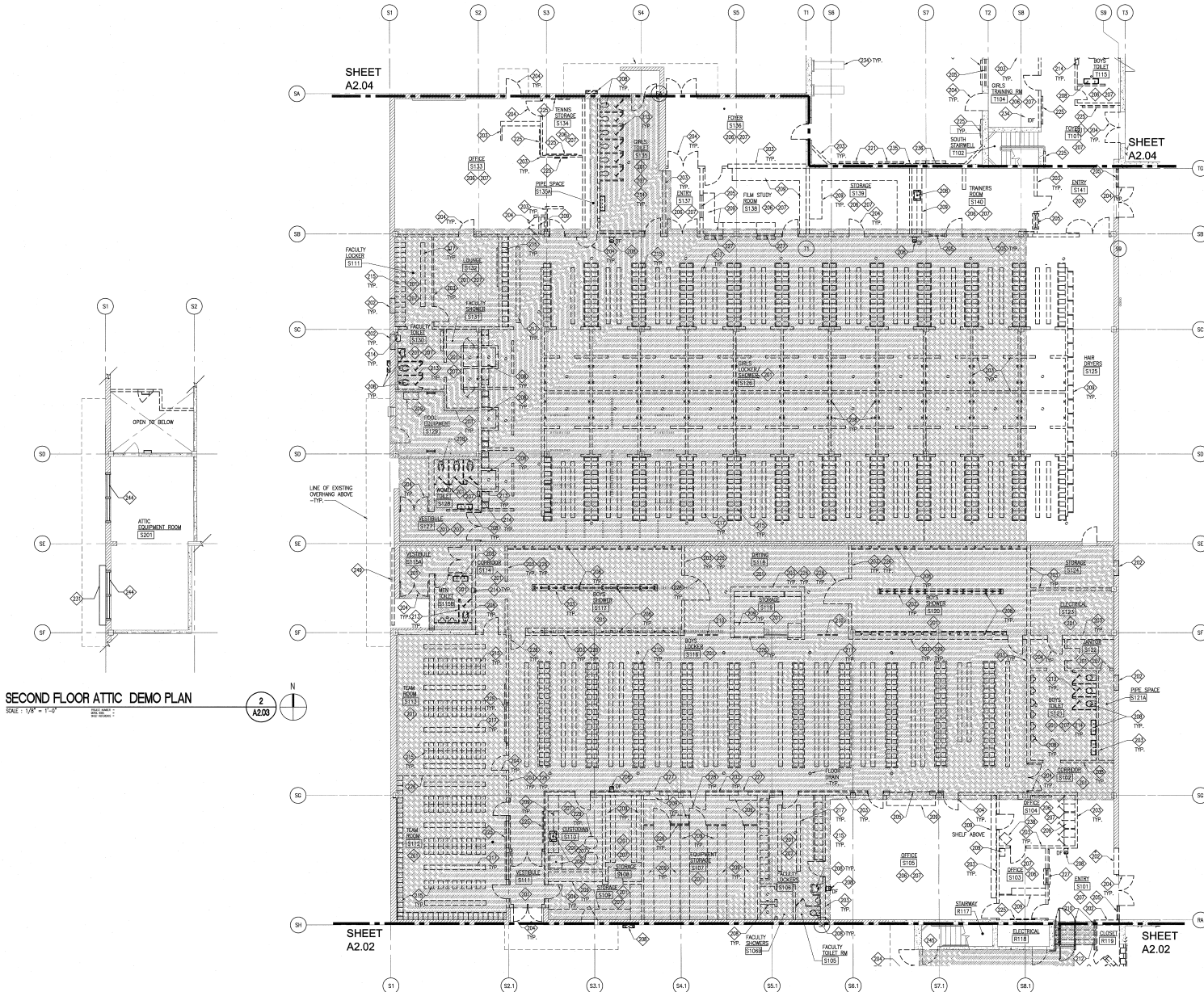


# Gym Modernization - Building R Demolition

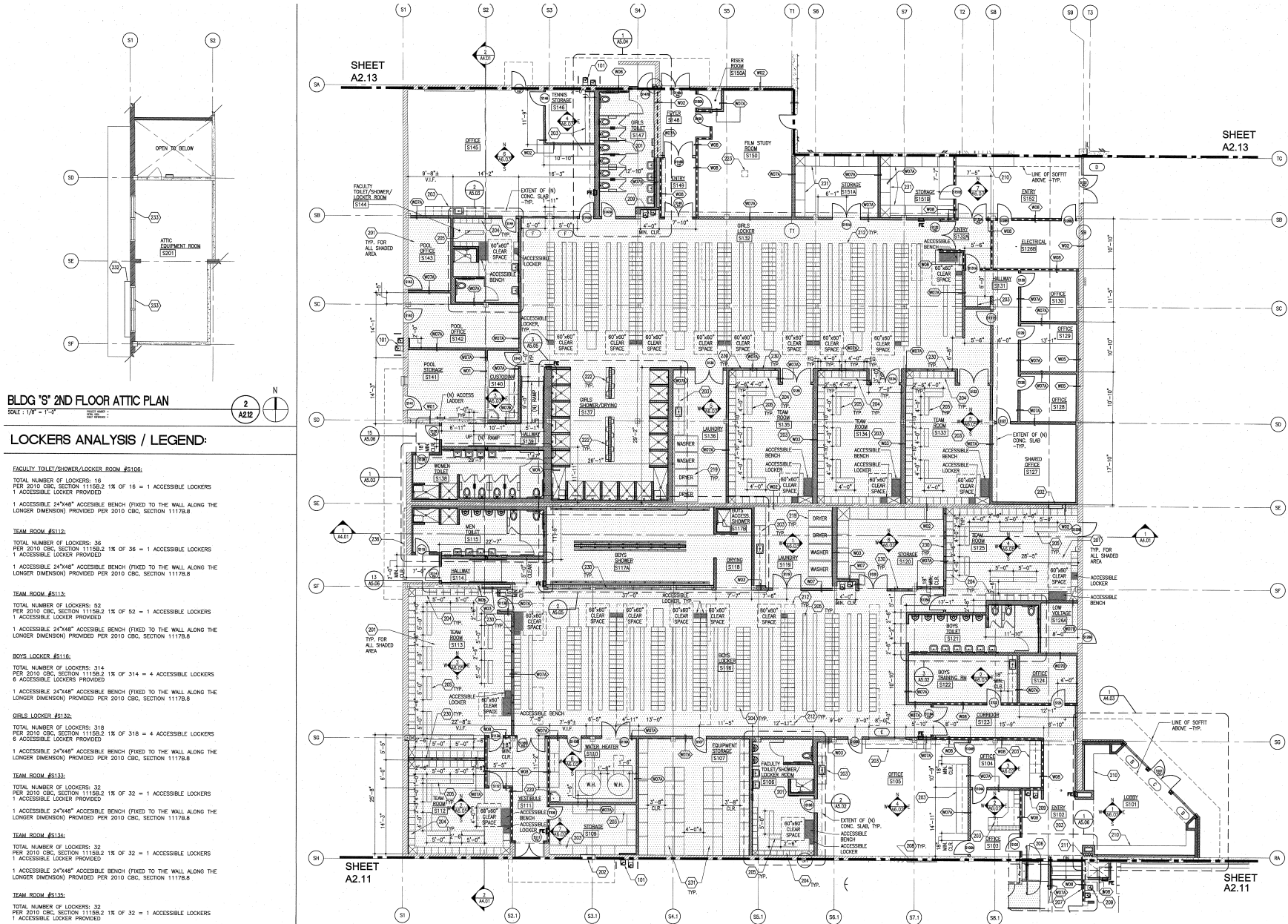


- ☐ ACCESSIBLE LOCKER
- ☐ ACCESSIBLE REMOVAL

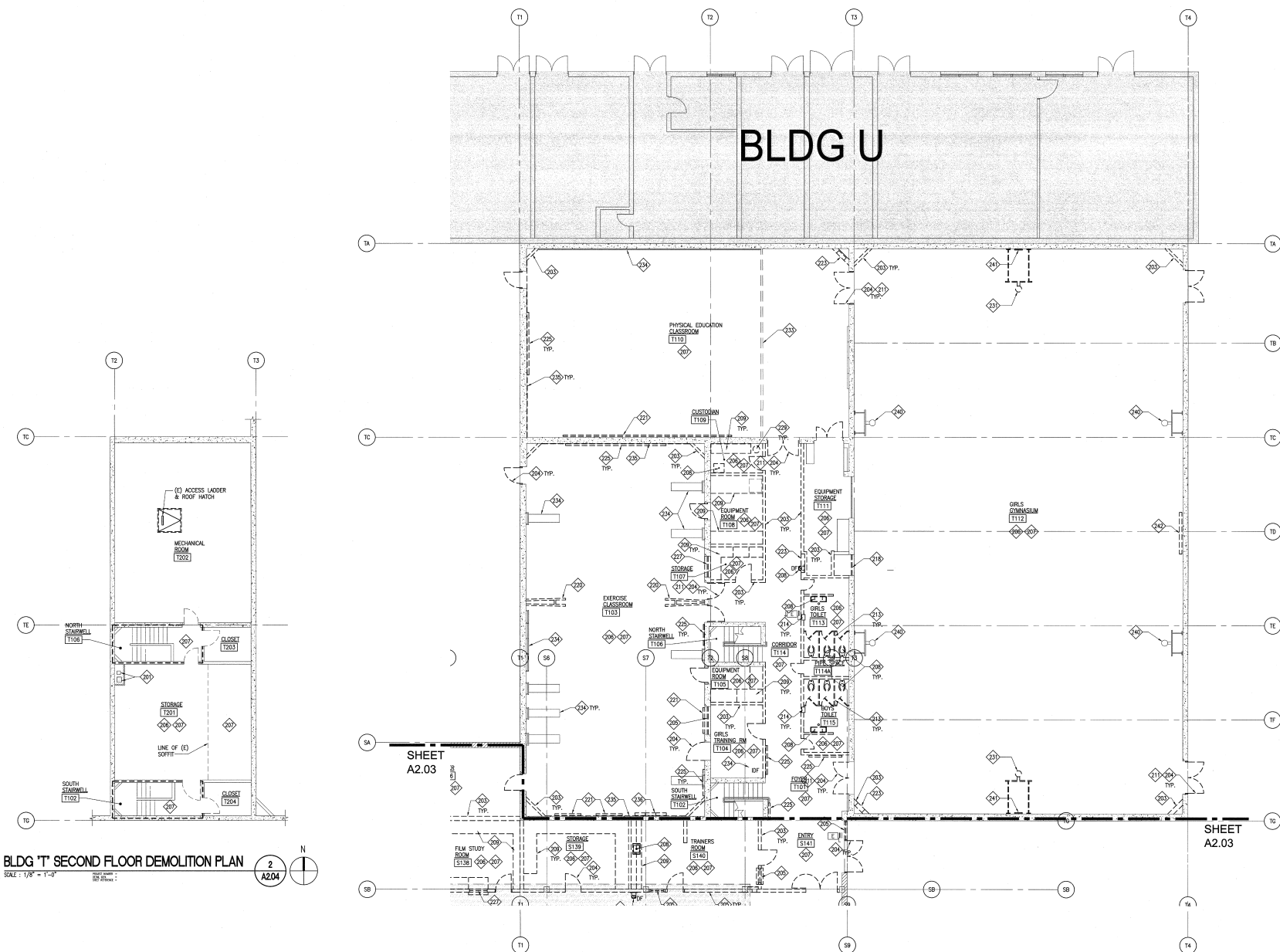
# Gym Modernization - Building S Demolition



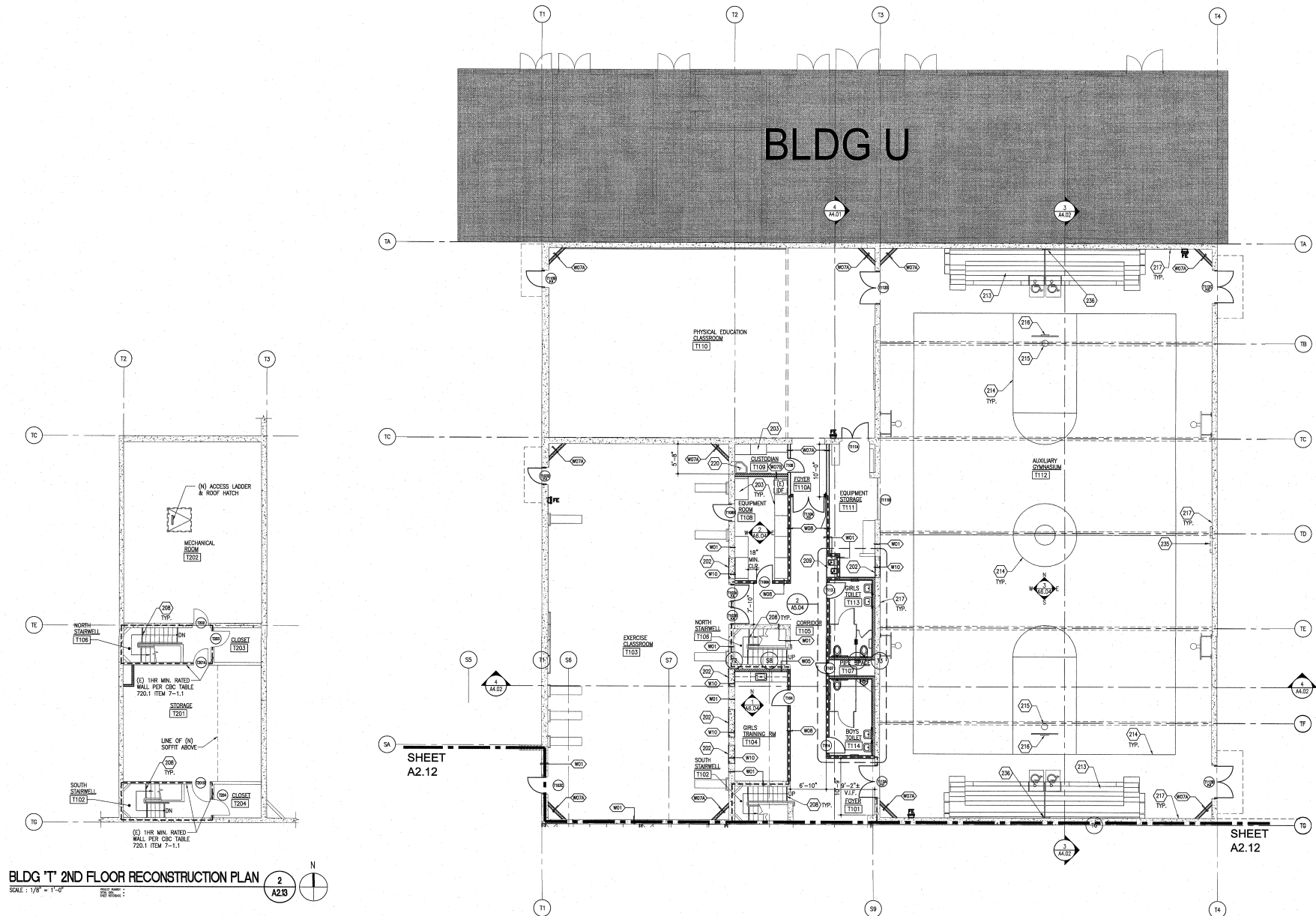
# Gym Modernization - Building S Reconstruction



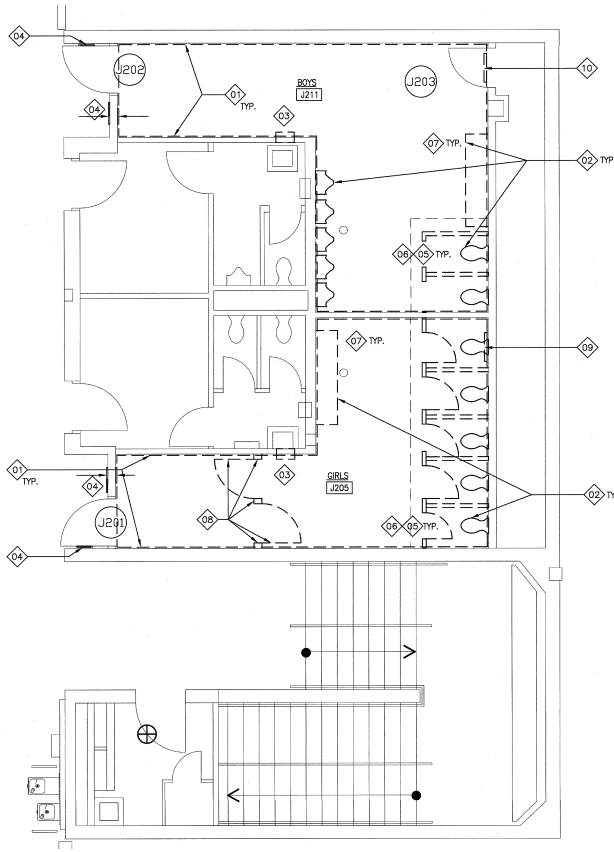
# Gym Modernization - Building T Demolition



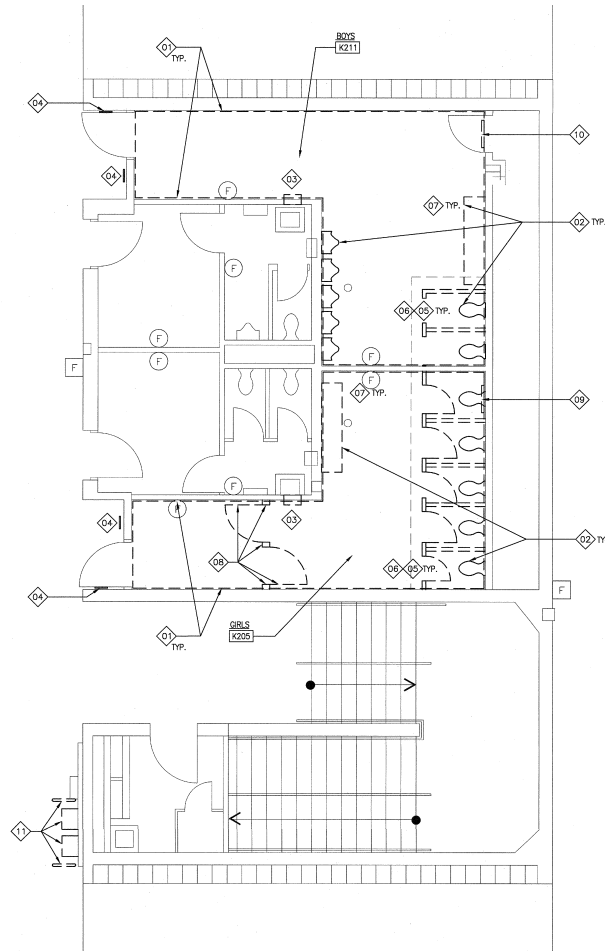
# Gym Modernization - Building T Reconstruction



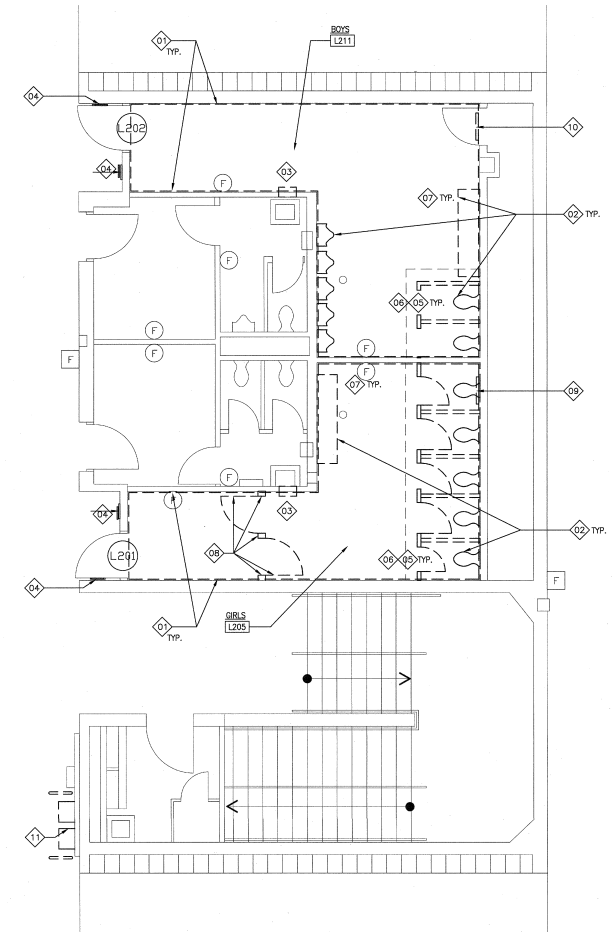
# Restroom Modernization - Demolition



Building J - 2nd Floor

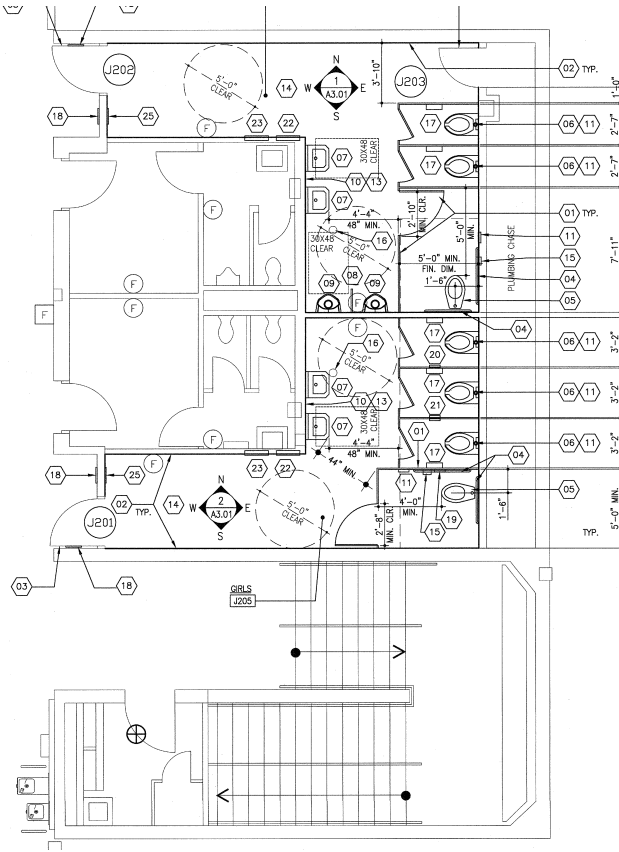


Building K - 2nd Floor

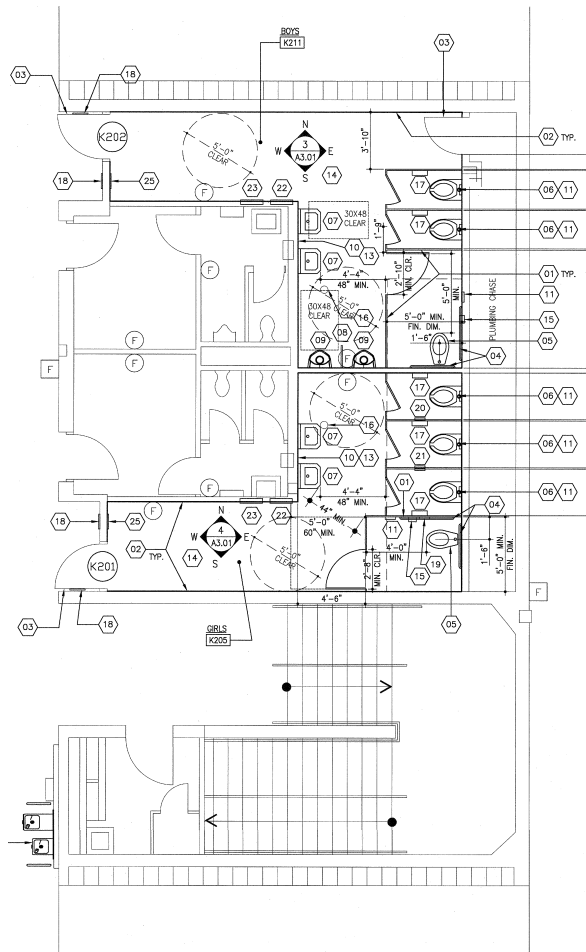


Building L - 2nd Floor

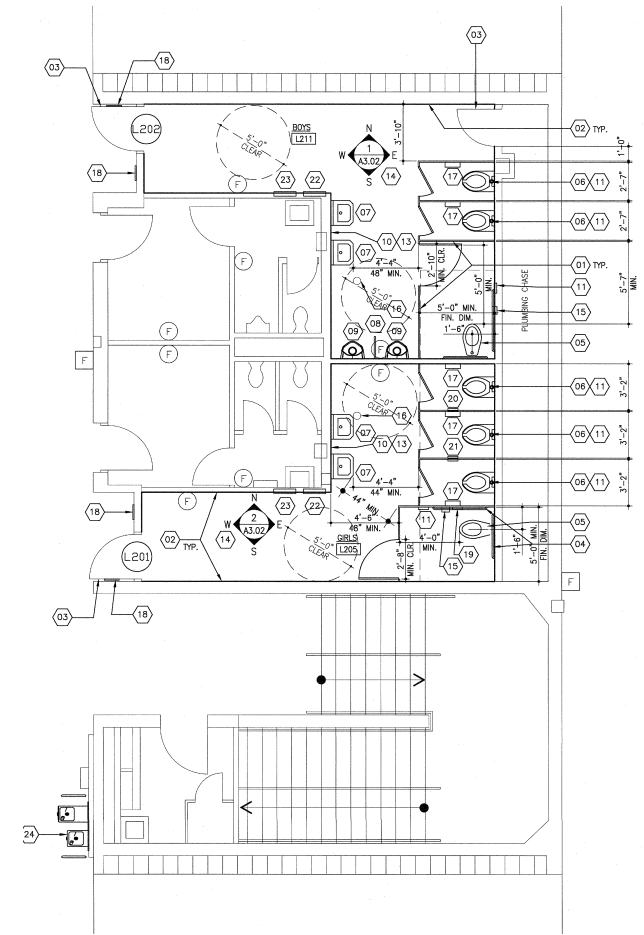
# Restroom Modernization - Reconstruction



Building J - 2nd Floor



Building K - 2nd Floor



Building L - 2nd Floor

# Campus Identity - Landscape



DECOMPOSED GRANITE PATH WITH BOULDERS AND DROUGHT-RESISTANT PLANTING



ALDEN-BLOCK™ EUROPA SEGMENTAL BLOCK



GRANITE PATIO



VEGETABLE / HERB GARDEN PLANTERS WITHIN



FLOR. GARDENS OF VARIOUS VARIETIES

*Chitalpa x fastidiosa* 'Pink Dawn' / CHITALPA  
*Lagerstroemia indica* / Crape Myrtle  
*Ipomoea fulva* / TULIP TREE  
*Platanus x acerifolia* 'Bloodgood' / LONDON PLANE

36" BOX  
36" BOX  
15 GAL  
15 GAL  
SPECIMEN FLOWERING TREE  
LARGE DECIDUOUS CANOPY SHADE TREE  
LARGE DECIDUOUS CANOPY SHADE TREE

## SHRUBS

*Escallonia montana* 'Trudea' / PINK ESCALLONIA

5 GAL  
PINK FLOWERS

*Leptospermum scoparium* 'Apple Blossom' / NZ TEA TREE  
*Rhaphiolepis indica* varieties / PINK INDIA HAWTHORNE

5 GAL  
5 GAL  
DEEP PINK FLOWERS  
PINK FLOWERS

## DROUGHT TOLERANT SPECIES

*Agave* species / AGAVE

5 GAL  
BOLD SUCCULENT

*Callistemon viminalis* 'Little John' / DWARF BOTTLEBRUSH  
*Cordyline* 'Festival Chase' / CABBAGE PALM

5 GAL  
5 GAL  
RED FLOWERS  
BURUNDY FOLIAGE

*Yucca filamentosa* / ADAM'S NEEDLE

5 GAL  
VARIEGATED YELLOW LEAVES

## GROUNDCOVER

*Coprosma kirkii* / KIRK'S COPROSMA

1 GAL  
BRIGHT GREEN FOLIAGE

*Lantana* varieties / LANTANA

1 GAL  
FLOWERING

*Trachelospermum jasminoides* / STAR JASMINE

1 GAL  
WHITE FLOWERS; SHADE TOLERANT

## PERENNIALS

## AGRICULTURAL SPECIES

*Citrus* Trees (Orange, Lemon, Lime)

15 GAL & 5 GALLON

Stone Fruit Trees (Plum, Nectarine, Peach, Cherry)

15 GAL

Avocado Trees (Hass variety)

15 GAL



VEGETABLE / HERB GARDEN PLANTERS WITHIN  
DECOMPOSED GRANITE PATIO



CITRUS TREE GROVE



SLOPE



GARDEN



0 15' 30' 45' 60' 90'  
SCALE: 1"=30'

KEYNOTE LEGEND #	
1	DECOMPOSED GRANITE SURFACE W/STEEL EDGING
2	LANDSCAPE BOULDERS (2'-4' DIA.)
3	CITRUS GROVE
4	VEGETABLE/HERB PLANTERS
5	SMALL / DWARF FRUIT TREES
6	PERENNIAL GARDENS
7	FLOR. GARDENS OF VARIOUS VARIETIES
8	ROSE GARDEN
9	GRASS FLOWER GARDEN
10	SCULPTURE / ARTWORK LOCATION
11	AVICULARY TREES
12	SHRUBS OF VARIOUS VARIETIES
13	EXISTING SEATWALL TO REMAIN
14	EXISTING TREE(S) TO REMAIN

**BUILDING 'A'**  
**FIRST FLOOR RECONSTRUCTION PLAN**

SCALE : 1/8" = 1'-0"

PROF. DRAWN :  
DATE REVISED :

2  
A2.01

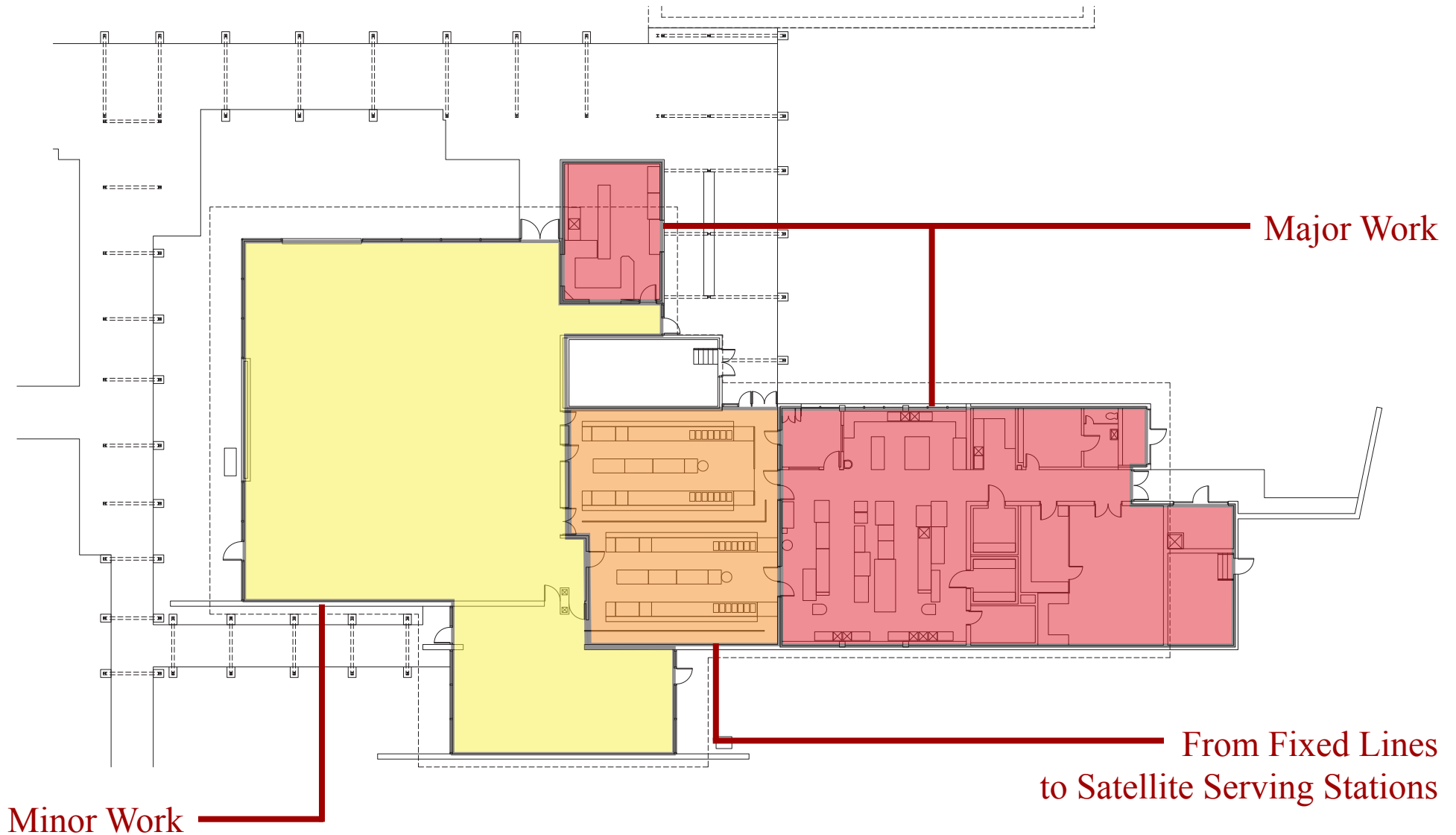
SCALE : 1/8" = 1'-0"

PROJECT NUMBER	DATE, YEAR	SHEET REFERENCE
----------------	------------	-----------------

2  
A2.01

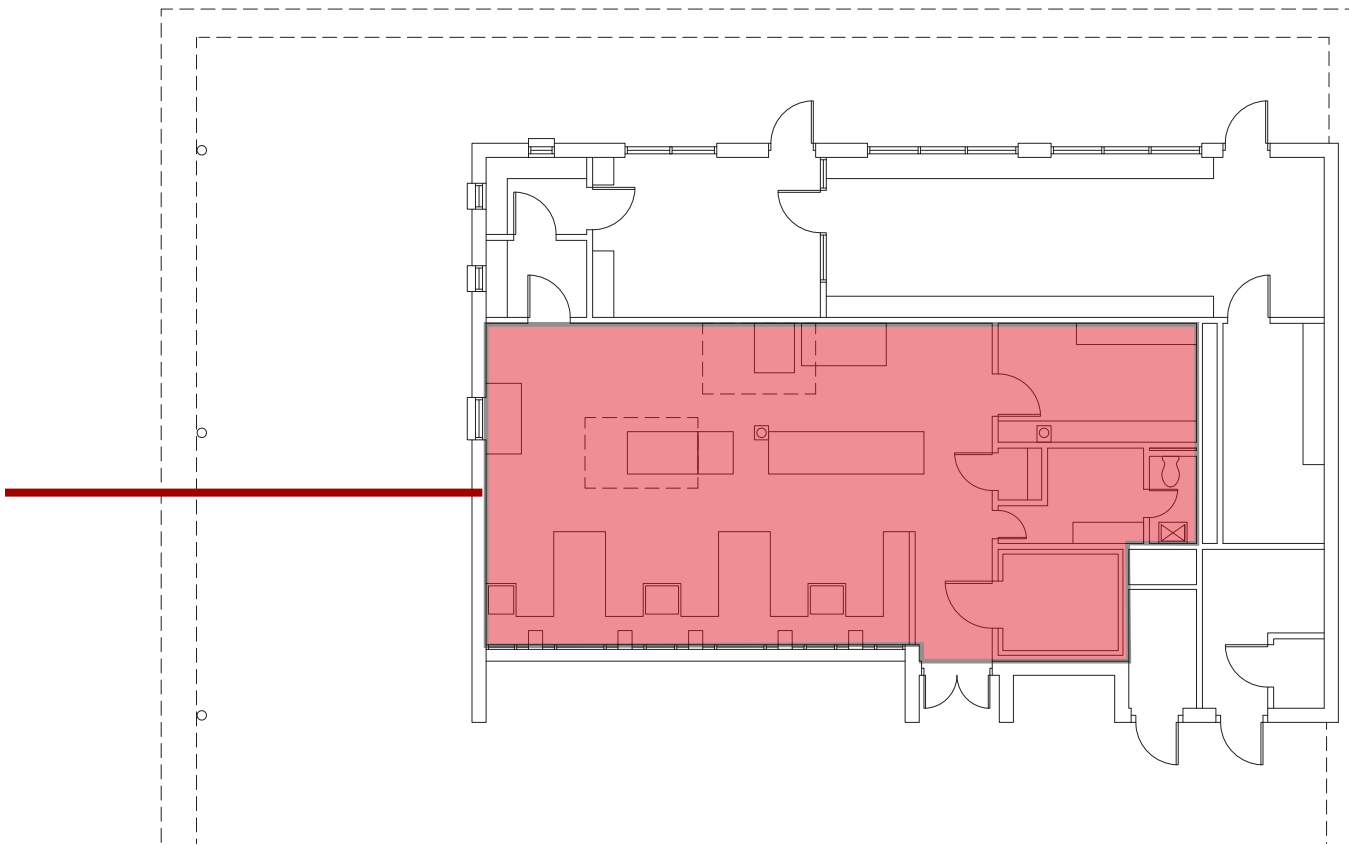


# Food Service Modernization - Building V



# Food Service Modernization - Building W

Major Work



# Timeline & Cost Estimates

## Phase 1 - Gymnasium Modernization

Early Start - June 2016

Phase A (Boy's Locker Room & Gym) - 12-14 Months

Phase B (Girl's Locker Room & Gym) - 10-12 Months

\* Total - 16-18 Months if constructed simultaneously

Cost - \$12,034,703.00

## Phase 3 - Campus Identity

Early Start - June 2016

Anticipated Construction Duration - 8-10 Months  
(In conjunction with phases 1 & 2)

Cost - \$1,670,819.00

## Phase 2 - Restroom Modernization

Early Start - June 2016

Anticipated Construction Duration - 6 Months

Cost - \$871,365.00

## Kitchen Modernization

Schematic Design  
Design Development  
Construction Documents



4-6 Months

DSA Submittal Review/Approval - 8-10 Months

Early Construction Start - Summer 2017

Estimated Probable Cost - \$3,950,000.00